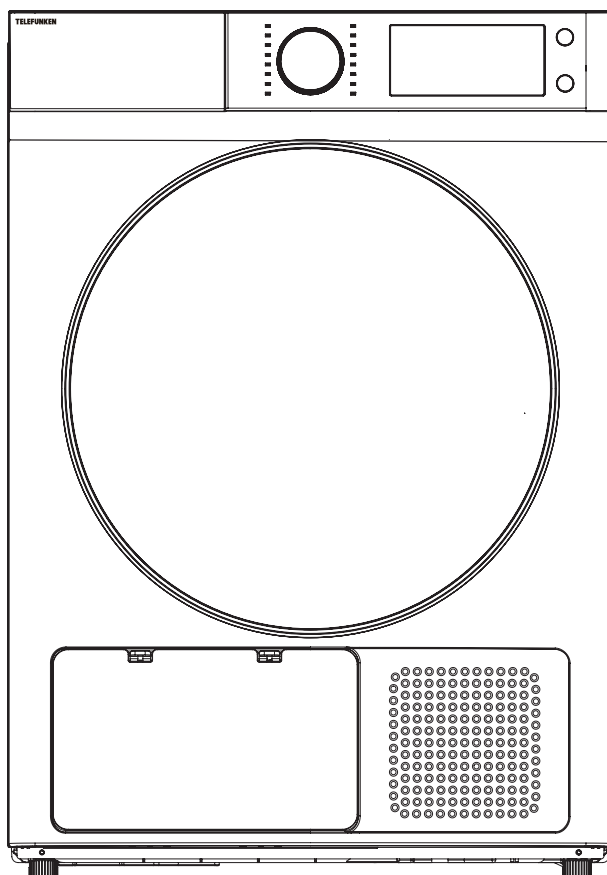


TELEFUNKEN

8KG HEAT PUMP TUMBLE DRYER

TF800AU8HP



INSTRUCTION MANUAL

Please read this manual carefully before using, and keep it for future reference.

CONTENTS

General Safety Instructions	4
Product Overview	8
Installation Instructions	9
Quick start	12
Introduction to Functions and Program	13
Instructions for Use	18
Service Guide	19
Troubleshooting Guide	21
Specifications	23
Customer Helpline	Last Page

GENERAL SAFETY INSTRUCTIONS

IMPORTANT INFORMATION

Please read this manual thoroughly before using the clothes dryer.

Following the safety precautions outlined in this manual will reduce the risk of fire, electric shock, and injury when properly followed.

Be sure to follow all instructions and pay attention to all warnings.

Pay close attention to messages that follow this safety alert symbol, or the words **DANGER**, **WARNING**, or **CAUTION**.

These words are used to alert you to potential hazards that could cause injury to you or others.

Following these instructions will help you reduce the risk of injury and understand the potential dangers if the instructions are not followed.

ELECTRICAL SAFETY

- **Voltage:** Plug the appliance into a 220–240V, 50Hz, properly earthed power outlet. Ensure the outlet is in good working condition.
- **Power Connection:** Do not use an adaptor or extension cord. Plug the appliance directly into a dedicated power outlet that cannot be accidentally turned off and is easily accessible so you can switch it off if needed.
- **Power Cord:** Do not kink or damage the power supply cord. Position it behind the appliance to prevent anyone from stepping on it or placing objects on or against it. A damaged power plug may overheat and cause a fire.
- **Damaged Cord:** Do not use the appliance if the cord is cracked or damaged. Damage to the cord may result in a short circuit, fire, or electric shock. Contact our support centre at info@ayonz.com for assistance.
- **Disconnection:** Never pull the power cord to unplug the appliance. Always grip the plug and pull it straight out from the socket. After turning the appliance off, wait at least 2 minutes before turning it back on.
- **Electrical Work:** If installation of this appliance requires electrical work, ensure it is performed by a qualified electrician.

WARNING

Make sure your home is fitted with a residual current device (Safety Switch).

GENERAL SAFETY INSTRUCTIONS (cont.)

To reduce the risk of fire, electric shock, or injury, always follow these basic safety precautions and accident prevention measures when using this appliance, including the following:

INSTALLATION

- This product is heavy. Use caution when moving it. To avoid back or other injuries, have two people lift it or use mechanical assistance during installation.
- When unboxing, thoroughly inspect the appliance for any damage. If any damage is found, do not install the appliance. Contact our support centre at info@ayonz.com for assistance.
- During installation, ensure the power cord is not bent or compressed.
- Install the appliance on a flat, level, and stable surface.
- Do not install the appliance inside a tightly enclosed cabinet.
- Do not install the appliance near heat sources such as radiators, heaters, or in direct sunlight.
- If the appliance is not wall-mounted, ensure it is not placed on soft materials such as plastic or foam.

WARNING

Ensure that all transport packaging is removed from the rear of the dryer.

Do not overload the dryer with too many clothes.

GENERAL SAFETY INSTRUCTIONS (Cont.)

USAGE CONDITIONS AND RESTRICTIONS

- Children must be supervised to ensure they do not play with the appliance. Never allow them to use, play with, or crawl inside the appliance. Cleaning and maintenance must not be performed by children.
- This appliance must not be used by persons (including children) with reduced physical, sensory, or mental capabilities, or lack of experience and knowledge—unless they are supervised or have been instructed on how to use the appliance safely and understand the hazards associated with misuse.
- Do not block any ventilation openings. Ensure that vents are not covered by any materials.
- Use this product only for its intended purpose, and only as described in this manual. Do not attempt to alter or modify the appliance in any way.
- Only load items that are suitable for drying in a clothes dryer.
- Do not place any open flames, such as candles, on or near the dryer.
- The door and window may become hot after a long cycle. Avoid touching the window and keep children away from the appliance during and after operation.
- Never stop the dryer before the end of the cycle. The final stage of the drying cycle operates without heat to ensure that items are left at a safe temperature.
- The only user-serviceable part is the filter. Do not open, disassemble, or attempt to repair any other part of the appliance. All servicing must be carried out by a qualified technician.
- Incorrect use of the appliance may result in property damage, injury, or death. We assume no liability for misuse or failure to comply with these instructions.

WARNING

Never attempt to repair, modify, or replace any part of the appliance unless explicitly stated in this manual. All other servicing must be performed by a qualified technician, or you can contact our support centre at info@ayonz.com for assistance.

IMPORTANT

Before using the washing machine for the first time, you must remove the four transport bolts from the rear of the unit.

Failure to remove these bolts before initial use will cause damage to the appliance and void the warranty.

GENERAL SAFETY INSTRUCTIONS (Cont.)

CAUTION

THE FOLLOWING ITEMS ARE NOT SUITABLE FOR DRYING.

USING THEM IN THE APPLIANCE MAY CAUSE A FIRE OR SEVERE DAMAGE.

DO NOT PLACE THE FOLLOWING ITEMS IN THE DRYER:

- Items containing rubber or foam-like rubber, or any similar textured materials.
- Items that are spotted or soaked with cooking oil or other flammable substances, including but not limited to: kerosene, stain removers, dry-cleaning solvents, alcohol, petrol, turpentine, waxes, hair care products, and wax removers.
- Undergarments that contain metal reinforcements (e.g., underwire bras), plastic items such as shower caps, and waterproof bibs.
- Rubber-backed items, garments with foam rubber pads, pillows, galoshes, and rubber-coated tennis shoes.
- Fabric softeners or similar products, unless specifically recommended by the manufacturer for use in a clothes dryer.

CAUTION

- Do not use the tumble dryer if industrial chemicals have been used to clean the items.
- Do not dry unwashed items in the dryer.
- Do not allow lint to accumulate around the tumble dryer. Clean the lint trap and filter after every use.
- Ensure adequate ventilation is provided to prevent the backflow of gases into the room from appliances that burn other fuels, including open fires.
- Remove all objects from pockets, such as lighters and matches, before drying.

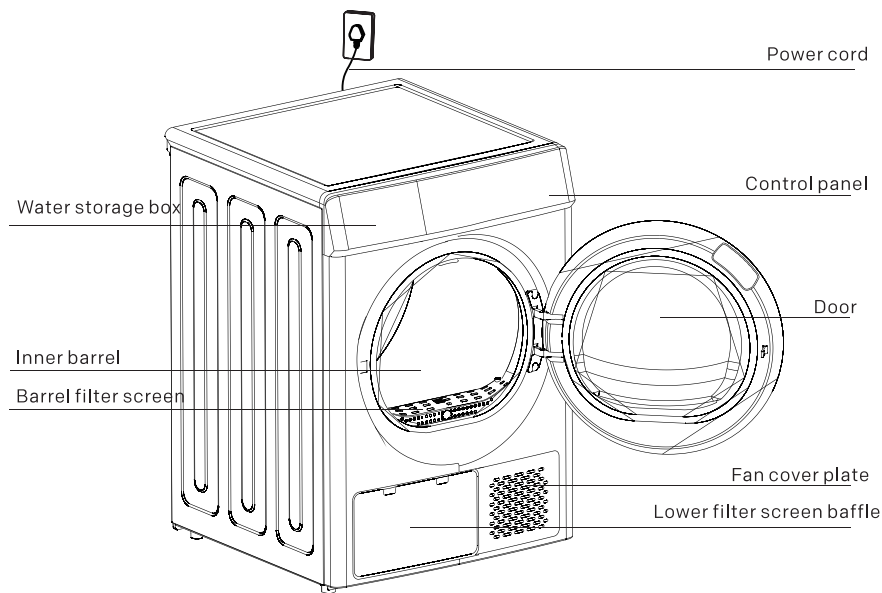
If it is unavoidable to place fabrics that contain vegetable or cooking oils, or that have been contaminated by hair care products, in the tumble dryer, they must first be washed in hot water with extra detergent. This will reduce—but not eliminate—the fire hazard.



WARNING: Risk of fire

This symbol alerts you to exercise caution, as oil-affected items can ignite—especially when exposed to heat, such as in a clothes dryer. When these items become warm, an oxidation reaction occurs in the oil, which generates heat. If this heat cannot escape, the items can become hot enough to catch fire. Piling, stacking, or storing oil-affected items can trap the heat, creating a serious fire hazard.

PRODUCT OVERVIEW



ATTACHMENT SPECIFICATION

External drain
pipe assembly

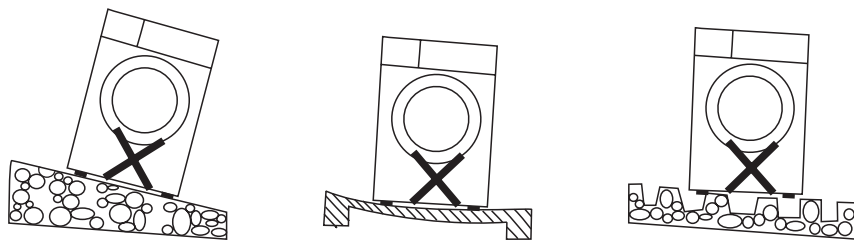


Note: This image is a schematic diagram for reference only. The actual product may differ.

INSTALLATION INSTRUCTIONS

INSTALL THE TUMBLE DRYER

- It is recommended to place the Tumble Dryer close to the washing machine, so that clothes can be dried immediately after washing and spinning.
- To prevent the fan cover from becoming blocked due to dust accumulation, do not install the Tumble Dryer in a dusty environment.
- Remove all packaging materials from the Tumble Dryer, and place it on a firm, flat surface—not on a blanket or stand.
- When installing, adjust the feet to ensure the Tumble Dryer is level. Do not fill the gap between the feet and the floor with plush carpets or wooden strips, as this may interfere with the machine's operation.
- Ensure the installation location is at least 5 cm away from walls or other furniture.

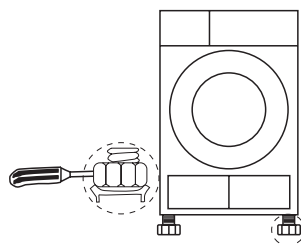


LEVEL ADJUSTMENT

Adjust the feet to ensure the Tumble Dryer is placed horizontally.

1. The height can be adjusted by rotating the feet.
2. Tools can be used to assist in adjusting the height of the Tumble Dryer's feet.

Note: Use a screwdriver with a diameter of less than 4.5 mm when adjusting the feet.



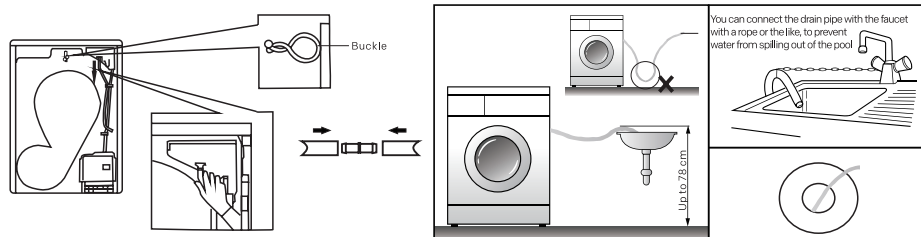
POWER CONNECTION

1. Ensure that the power supply meets the specifications listed on the Tumble Dryer's nameplate.
2. Do not use a power strip or universal socket for secondary connection.

INSTALLATION INSTRUCTIONS (CONT.)

ACCESSORIES INSTALLATION

- *(Install accessories only if necessary. The Tumble Dryer can function normally without them.)*
- Installation of the External Drain Pipe
Install the external drain pipe if required. If it is not installed, please use the water storage box.

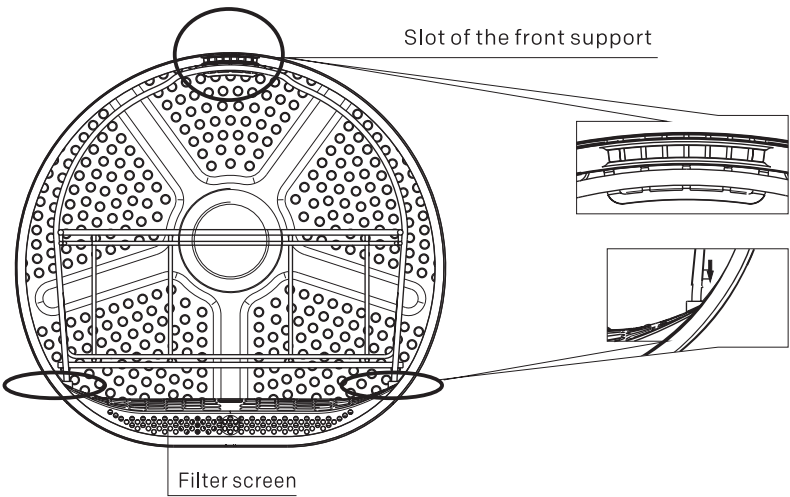


1. Pull the upper drain pipe downward to remove it.
2. Connect the upper drain pipe to the external drain pipe.
3. Secure the external drain pipe to the buckle.
4. Place the external drain pipe into a sink or floor drain.

(Note: Do not bend the external drain pipe.)

Attention: Make sure the entire drainage pipeline is unobstructed!

INSTALLATION INSTRUCTIONS (CONT.)



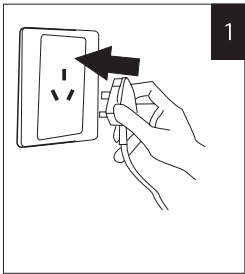
Install the steel bracket first, as shown in Step 2, and then place the plastic bracket onto the steel bracket.

Note: This illustration applies only to products equipped with the rack and holder.

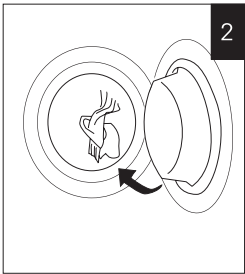
QUICK START

Note: Before using this machine, please ensure that it has been installed correctly according to the installation instructions.

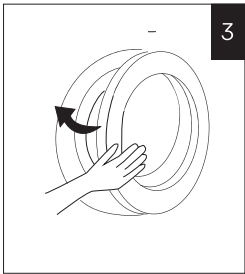
STEP 1: PREPARING CLOTHES FOR DRYING



Plug in the power plug



Put in clothes



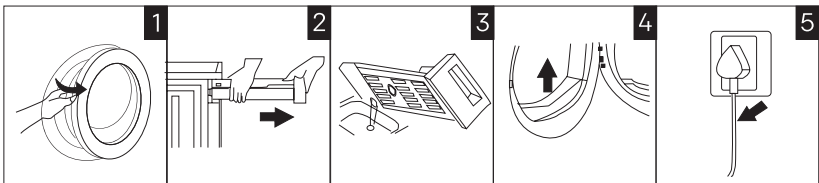
Close the door

STEP 2: START DRYING CLOTHES



STEP 3: END OF DRYING CYCLE

When drying is complete, the Tumble Dryer will either emit a sound prompt or display the word “End” on the screen.



Open the door, take out the clothes

Pull the water storage box

Pour out the water in it

Clean the filter screen (there are two filter screens)

Cut off power

Note:

- 1. If you are using a socket with a switch, please directly press the switch to turn off power.
- 2. When pouring the water in the water storage box, pour it directly (without opening other parts).

INTRODUCTION TO FUNCTIONS AND PROGRAMS

OVERVIEW OF OPERATION PANEL FUNCTIONS



1. On/Off

Starts or shuts down the Tumble Dryer.

2. Start/Pause

Press the Start/Pause button to begin or pause the drying cycle.

3. My Cycle

Allows you to save and retrieve commonly used programs and settings.

(1) Memory Storage:

During parameter setup after startup, press and hold the Memory key to save the current settings.

(2) Memory Recall:

The next time you turn on the machine, whether in standby mode or during parameter setup, you can retrieve the saved settings by pressing the Memory key for quick access.

(3) Memory Indicator Light:

After saving or retrieving a memory setting, the memory indicator light (heart icon) located above the Memory button on the right side of the display will illuminate.

(4) Sound Prompts:

When saving a memory setting: the machine will chime twice (“ding dong”).

When retrieving a saved memory setting: the machine will chime three times.

(5) Memory Limit:

Only one set of parameters can be saved at a time—your most frequently used or favorite program. The machine does not support storing multiple configurations, nor is it necessary.

4. Delay

Press the Delay button to enter delay mode. Press it again to select your desired delay time, then press Start/Pause to activate the delay.

Note: The delay time must be set after selecting the program and before pressing Start/Pause.

INTRODUCTION TO FUNCTIONS AND PROGRAMS (CONT.)

5. **Child Lock (Hold 3 Seconds)**

To prevent children from operating the machine during a cycle, the Child Lock function can be enabled.

While the dryer is running, press and hold the Child Lock button for 3 seconds to activate the lock. The Child Lock indicator will light up.

Press and hold the button again to deactivate it—the indicator will turn off.

When Child Lock is active, all other buttons are disabled.

6. **Time+ / Time-**

These buttons are used to adjust the drying time. Different programs allow different time ranges.

Note: Some programs do not allow manual adjustment of drying time.

7. **Anti-Crease**

- Automatic Anti-Crease: After the drying cycle ends, the Tumble Dryer automatically activates the anti-crease function to help prevent wrinkles in clothes left inside
- Manual Anti-Crease: You can also manually enable the anti-crease function by pressing the Anti-Crease button. The function runs for 180 minutes, activating once every 10 minutes.

8. **Dry Level**

Press the Dry Level button to select the desired level of dryness.

Different programs support different dryness levels.

Note: The Dry Level cannot be selected in timed drying programs.

Available options include:

- IRON – Leaves clothes slightly damp for easier ironing
- Dryness Levels – Level 1#, Level 2*, Level 3*

9. **Iron**

Press the Iron button to activate the ironing-friendly setting.

Note: This option is not available in timed drying programs.

10. **Lamp**

Press the Lamp button to turn the internal light on or off.

11. **Buzzer**

An audible warning will sound when a knob or button is triggered.

If you prefer to disable sound alerts, press the Buzzer button.

When the buzzer is off, no sound will be heard when the program finishes.

INTRODUCTION TO FUNCTIONS AND PROGRAMS (CONT.)

INTRODUCTION TO OTHER FUNCTIONS

 Filter Screen Indicator: Alerts the user to clean the filter screen.

 Water Storage Box Indicator: Alerts the user to empty the water storage box.

- Add Clothes Mid-Cycle: During drying, press the Start/Pause button. The Tumble Dryer will pause, allowing you to open the door and add clothes.
- Reservation Time: Refers to the total time from the start of the delay (reservation) to the end of the drying cycle.
- After the drying program finishes, if no error or alert occurs, “End” will be displayed on the screen and a melody will play to notify the user.
- If there is no user interaction within 10 minutes after the program ends, the machine will automatically switch to the Wrinkle Prevention mode.
- Once the Wrinkle Prevention cycle completes, the machine will automatically power off.
- While in the End state, opening the door will immediately put the machine into Shutdown mode and trigger a sound prompt.

INTRODUCTION TO FUNCTIONS AND PROGRAMS (CONT.)

The following procedures apply to 8.0 kg and 10.0 kg models:

NAME	CAPACITY (8 KG)	DESCRIPTION
ECO	8.0 kg	For drying cotton fabrics
MIX	4.0 kg	For blended fabrics (cotton and synthetic)
Shirts	1.0 kg	For drying shirts
Delicate	3.0 kg	For silk and delicate garments that are not heat-resistant
Duvet	4.0 kg	For heavy loads such as sheets
Baby Care	1.0 kg	For drying baby cotton clothing
Down Jacket	1.5 kg	For drying down-filled coats or duvets
Underwear	A little	For small intimate garments
Hygiene	≤ 3.0 kg	Sterilization for clothes stored long-term
Towel	3.0 kg	For drying towels
Sports	A little	For breathable sportswear
Time Dry	--	Manual timed drying mode
Refresh	A little	Timer program for deodorizing and freshening clothes
Hair Removal	A little	Timer program for lint removal
Warm Clothes	A little	Timer program for warming clothes
Air Wash	A little	Gently tumbles clothes with warm air only

INTRODUCTION TO FUNCTIONS AND PROGRAMS (CONT.)

NOTE:

1. The procedures listed above are recommended settings. Users may select different programs according to their personal preferences. If clothes are not completely dry, a time-adjustable program can be selected to continue drying.
2. Time-adjustable programs do not automatically detect the moisture level.
If the clothes remain damp after the cycle ends, please repeat the program or extend the drying time until the clothes are fully dried.
3. Large items such as sheets or curtains may become tangled into a ball during drying.
If this occurs, stop the Tumble Dryer, remove the items, shake them out, and place them back into the dryer to resume drying.
4. When drying down-filled garments, turn them inside out before starting the drying process.
5. The initial display time is the default estimate.
In actual operation, the drying time may vary depending on environmental temperature and humidity, as well as the type and weight of the laundry.
The humidity sensor automatically detects the moisture level and adjusts the drying time accordingly.
It is normal for the time shown on the LED display to increase or decrease during the cycle.
6. Procedures marked with a timer ⌚ icon are time-based and will stop once the set duration has elapsed.

INSTRUCTIONS FOR USE

PREPARATIONS BEFORE DRYING CLOTHES

Note: After handling or moving the machine, allow it to stand upright for at least 2 hours before use. Before using the dryer for the first time, use soft cloth strips to clean the inner drum.

Steps:

- a) Place a few soft cloth strips inside the drum.
 - b) Plug in the power cord and press the Power button.
 - c) Select the Timed Drying program and press the Start/Pause button.
 - d) After the cycle finishes, clean the filter screen as described in the Cleaning and Maintenance section.
- During operation, it is normal to hear sounds generated by the compressor and drain pump.

GENERAL TIPS AND BEST PRACTICES FOR USING THE TUMBLE DRYER

1. Always dehydrate clothes using a spin cycle before placing them in the dryer. The drier the clothes, the more time and energy you save.
2. Shake out clothes, zip up zippers, and button up buttons before placing them in the dryer. To minimize noise from fasteners, turn clothes inside out before drying.
3. Clean the filter screen before every drying cycle.
4. Select the appropriate drying program based on the fabric type and care label instructions.
5. For optimal results, sort clothes by fabric thickness and moisture level. Avoid drying items of varying thicknesses or wetness together.
6. For small loads, it is recommended to use a time-adjustable drying program.
7. When drying large items such as sheets or curtains, if they become tangled, pause the cycle, shake them out, and resume drying.
8. For garments intended to be tumble dried, it is recommended to use fabric softener during washing to improve drying performance and softness.

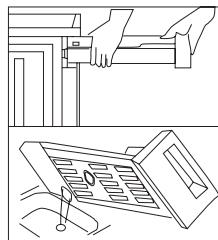
SERVICE GUIDE

CLEANING AND MAINTENANCE

A. Emptying the Water Storage Box

Steps:

1. Hold the water storage box with both hands and carefully pull it out.
2. Pour out the water from the box.
3. Return the water storage box to its original position.



WARNING:

- Please empty the water storage box after each use. If it becomes full during the drying process, the cycle will pause and the Water Box indicator will light up on the display. You must empty the box and press the Start/Pause button to resume operation
- Condensed water is not drinkable!
- Do not operate the Tumble Dryer without the water storage box installed.

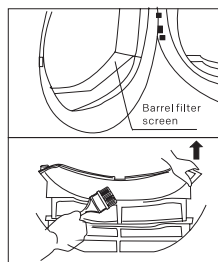
B. Cleaning the Filter Screen Assembly

Your machine may have one or two filter screens depending on the model. The filter screen(s) must be cleaned after each use.

Cleaning the Barrel Filter Screen:

1. Open the dryer door.
2. Remove the barrel filter screen.
3. Open and clean the screen.
4. Reinsert the screen back into its original position.

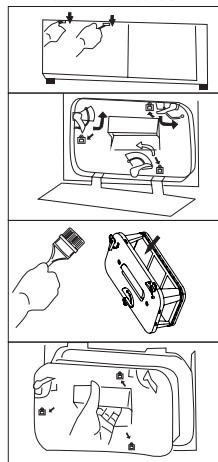
Barrel filter screen:



Cleaning the Lower Filter Screen:

1. Pull open the filter screen cover in the lower left corner of the machine.
2. Turn the knob to release the filter screen.
3. Remove the lower filter screen.
4. Clean it thoroughly.
5. Reinsert it into its original position.

Lower filter screen:



General Cleaning Steps:

1. Clean the filter screen and vent. Remove all lint or fluff, and rinse the screen under running water or clean it with a soft brush.
2. Ensure the filter screen is completely dry before reinstalling it.

SERVICE GUIDE (CONT.)

CLEANING AND MAINTENANCE

WARNING:

- Excessive lint on the filter screen can block air circulation, resulting in longer drying times and increased energy consumption.
- Do not operate the Tumble Dryer without the filter screen installed.
- Always clean the filter screen after each use.

C. Cleaning the Heat Exchanger

It is recommended to clean the heat exchanger once a month, or as needed.

Cleaning Steps:

1. Open the lower filter screen cover located at the bottom left corner of the machine
2. Turn the knob and remove the lower filter screen.
3. Clean the heat exchanger gently using a soft brush.
4. After cleaning, reinstall the lower filter screen, knob, and baffle in their original positions.

Note:

1. Do not apply excessive force while cleaning the heat exchanger, as this may cause damage.
2. Always disconnect the power before cleaning.

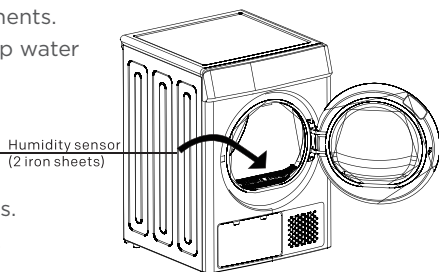
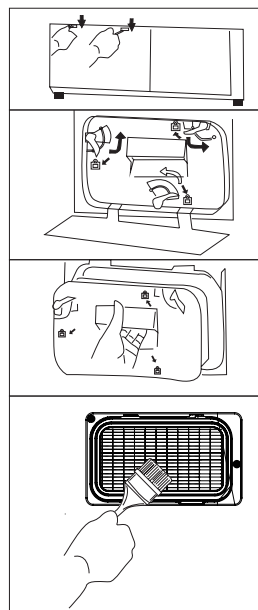
D. Cleaning the Tumble Dryer Drum

WARNINGS

1. Always disconnect the power before cleaning.
2. Wear gloves during cleaning for safety.
3. When cleaning the surface or parts of the dryer, use a soft cloth dampened with clean water. Avoid using harsh chemicals, as they may damage plastic surfaces or components.
4. Do not rinse the Tumble Dryer directly with a tap water hose or high-pressure water gun.

Cleaning Steps:

1. Prepare a soft cloth soaked in clean water.
2. Wipe down the door, especially the interior glass.
3. Clean the sealing ring around the door opening.
4. Wipe the drum's humidity sensor.
5. Remove any lint or fluff from the air duct.
6. Before starting the machine again, dry all cleaned surfaces with a soft, dry cloth.



TROUBLESHOOTING GUIDE



CLEANING AND MAINTENANCE

Note: The humidity sensor is located inside the drum of the Tumble Dryer, beneath the lint collection port. Do not clean the drum with corrosive detergents, and avoid scratching the humidity sensor.

ALARM PROMPT

ALARM CODE	ALARM REASON	SOLUTION
OE	The water storage box is full or the drain pump is malfunctioning	If the issue persists after emptying the water storage box, please contact the national service hotline.
dE	The door is not closed or not fully closed	If the issue persists after properly closing the door, please contact the national service hotline.
LE	The filter screen is not cleaned, or the motor is malfunctioning	If the issue persists after cleaning the filter screen, please contact the national service hotline.
HE	The compressor is malfunctioning	Please turn off the power and contact our service center.
tE1	Abnormal temperature in the front air duct	
tE2	Abnormal condenser temperature	
SE	The humidity sensor is malfunctioning	

Remarks:

- When the  symbol appears during operation, please check whether the water storage box is full. If it is full, empty the box and restart the machine. If it is not full, you may restart the machine directly.
- When the  filter indicator appears during operation, please check whether the barrel filter screen and lower filter screen are full. If they are filled with lint, clean them and restart the machine. If they are clean, you may restart the machine directly.

TROUBLESHOOTING GUIDE (CONT.)

FAULT PHENOMENA AND TROUBLESHOOTING

Only authorized professional service technicians are permitted to repair the Tumble Dryer.

Before contacting the service hotline, please check whether the issue can be resolved by yourself or if the machine is being used correctly. If the product is within the warranty period, technicians will provide guidance and support accordingly.

PROBLEM	SOLUTION
The display panel does not show any content	Check whether the power supply or plug is functioning properly. Ensure the power switch is turned on.
The tumble dryer does not start	Ensure the dryer door is fully closed. Confirm that a program has been selected and the Start/Pause button is pressed.
The door opens automatically	Press and hold the door handle so the lock engages properly. Also, check if the load is too large.
The drying standard is not met or the drying time is too long	Clean both the barrel and lower filter screens. Use a more suitable drying program, and ensure the fan cover is not blocked.

If you are unable to resolve the issue, please follow these steps:

1. Turn off the power to the Tumble Dryer.
2. Contact our service center.

SPECIFICATIONS

Power Supply	220-240V ~ 50Hz
Rated Power	650W
Grade of Waterproof	IPX4
Drying Capacity	8 kg
Weights	Net: 45 kg
	Gross: 50 kg
Dimensions	595 (w) x 615 (d) x 850 (h) mm

NOTE: The rated capacity is the maximum allowable load. Ensure that the dry clothes loaded into the appliance do not exceed this rated capacity each time.

- Oil-affected items can ignite spontaneously, especially when exposed to heat sources such as those inside a tumble dryer. When heated, an oxidation reaction occurs in the oil, which generates heat. If the heat cannot escape, the items may become hot enough to catch fire. Piling, stacking, or storing oil-affected items can trap heat and create a fire hazard.
- If it is unavoidable to place fabrics that contain vegetable or cooking oil—or those contaminated by hair care products—into a tumble dryer, they must first be washed in hot water with extra detergent. This will reduce, but not eliminate, the risk of fire.

TELEFUNKEN

CUSTOMER HELPLINE:

info@ayonz.com

02 8279 8606

DISTRIBUTED BY:

Ayonz Pty Ltd